

# PSSTool Installation User Guide

The application can be installed in Windows 7 or higher (Windows 8.1 not supported)

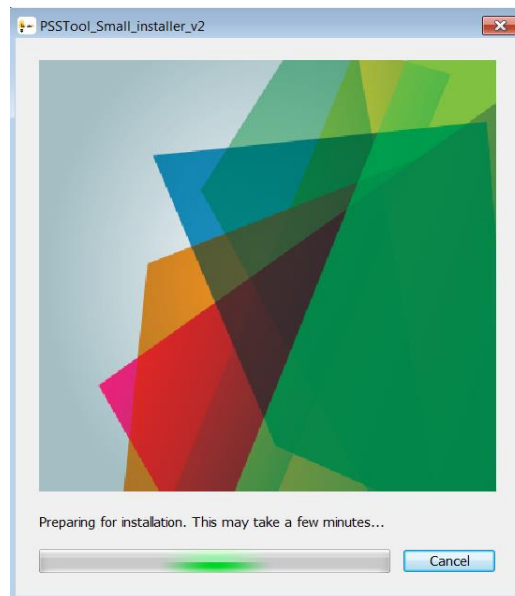
Internet connection is needed.

Disk space required: 800MB.

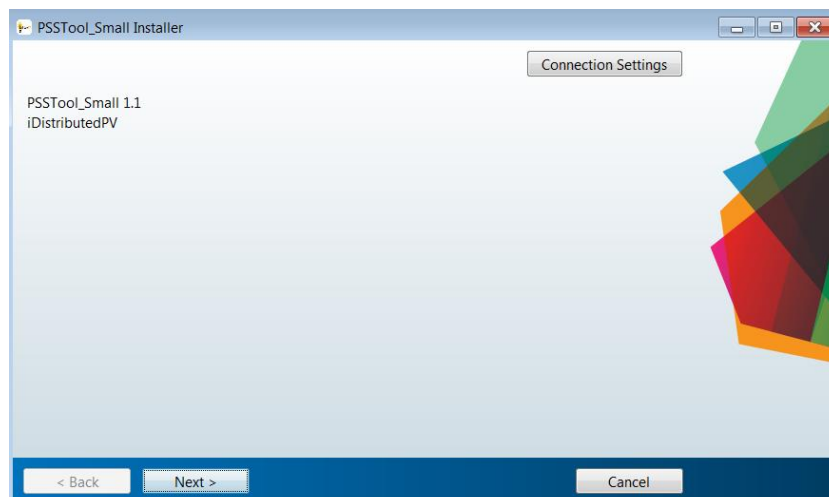
For further details about system requirements, go to

<https://mathworks.com/content/dam/mathworks/mathworks-dot-com/support/sysreg/files/system-requirements-release-2018b-windows.pdf>.

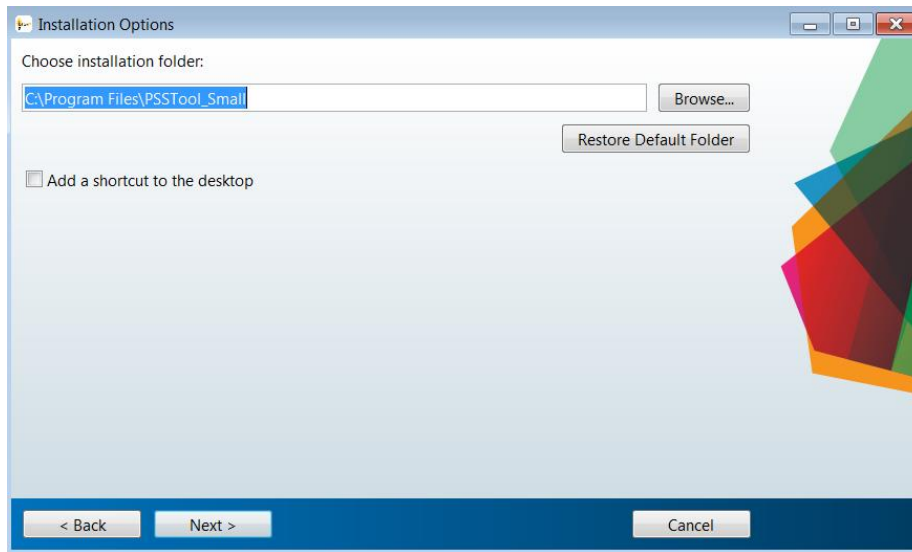
1. After clicking on the link ([http://www.idistributedpv.eu/prosumer\\_tool/ProSStool.rar](http://www.idistributedpv.eu/prosumer_tool/ProSStool.rar)), use the option Open to start the download. Once it is finished, extract the file "PSSTool\_Small" from the compressed folder and execute it.



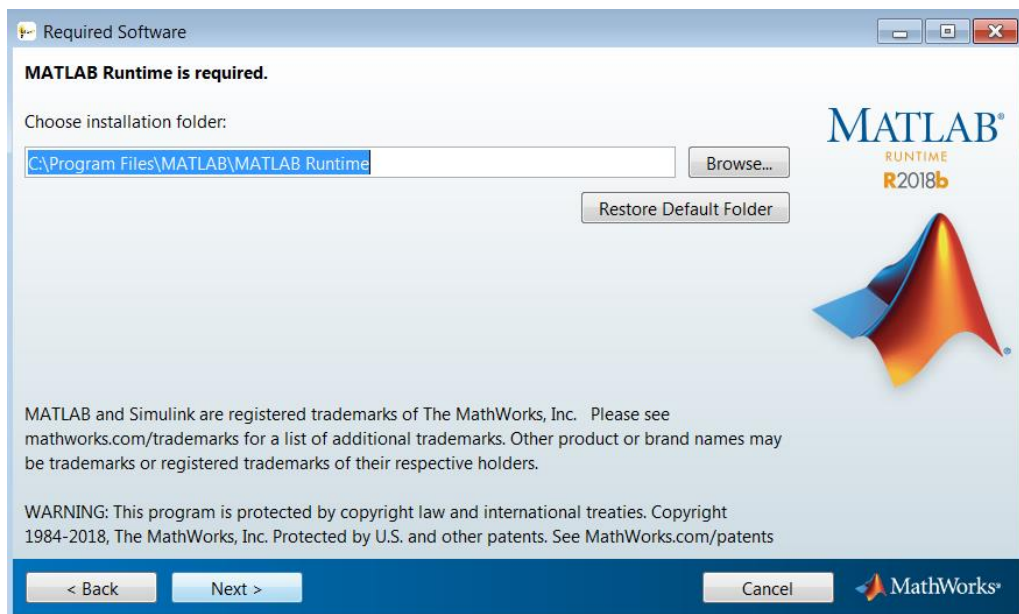
2. Wait a few minutes until the pre-installation is ready and click on Next.



3. Choose the location where the tool will be installed. By default, the folder will be at *C:\Program Files\PSSTool\_Small*. Optionally, user can check the corresponding box to create a shortcut to the tool executable in the Desktop. Click Next to continue.

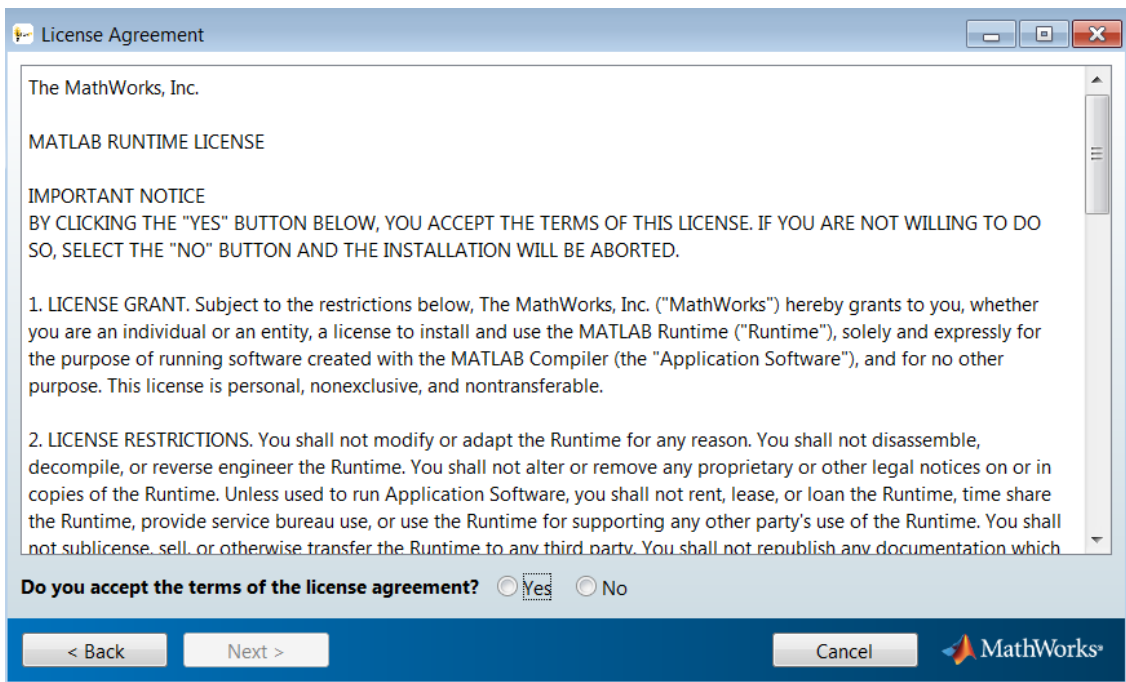


4. Choose the location where the Matlab Runtime (this is a necessary library to run the tool) will be installed. By default, the folder will be at *C:\Program Files\MATLAB\MATLAB Runtime*. Click Next to continue.

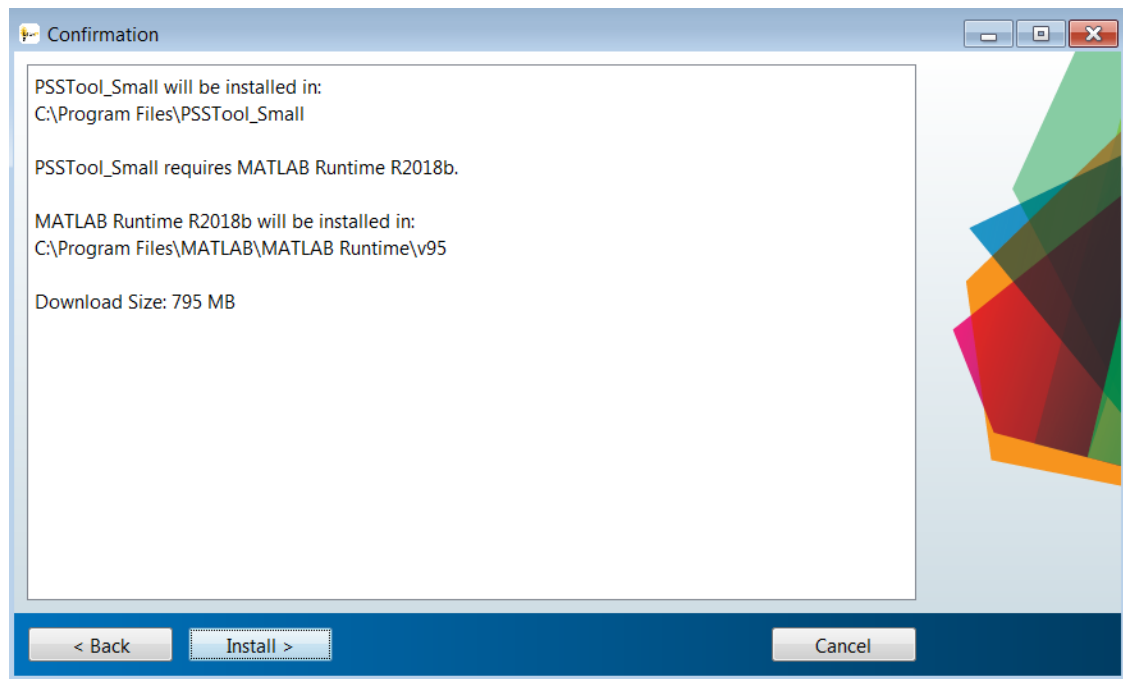


\* If there is a different Matlab Runtime already installed in the computer, it may cause problems when executing the tool.

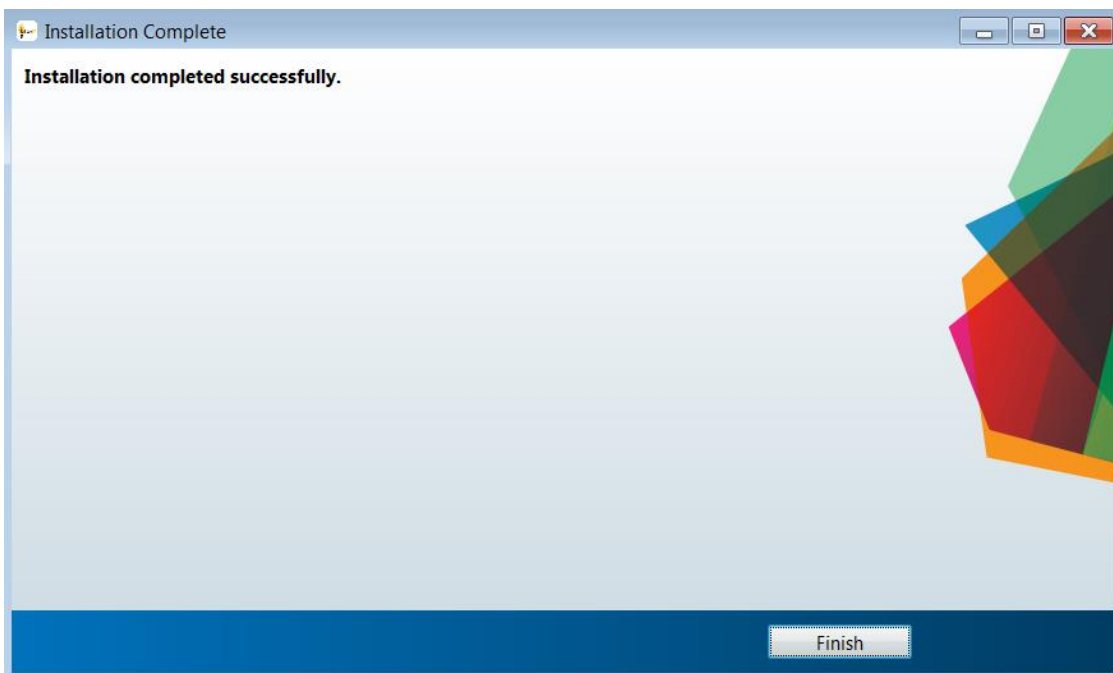
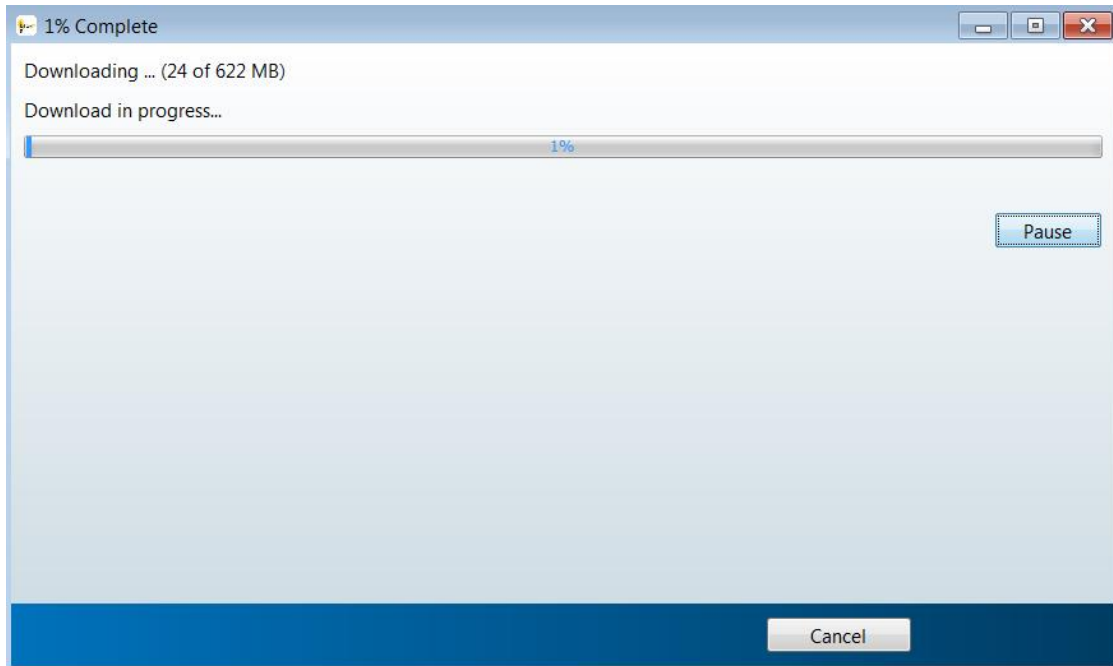
5. Accept the terms of the license agreement and the click Next.



6. Verify the routes chosen for the installation and click Install. The download and the installation may take several minutes.



7. Once the installation is finished, close the installer with Finish.



8. If the user did not checked the "Add a shortcut to the Desktop" box in the initial steps, the tool can be found in the installation folder, inside "application", as "PSSTool\_Small.exe", by default, at *C:\Program Files\PSSTool\_Small\application*.